

NZ Mens Sheds News

August 2025 Edition

The official newsletter of



A word from the National Chairman

Situations Vacant

Unfortunately, Neville has had to relinquish his position as Secretary due to health reasons.

But hot off the press, we are very pleased to welcome Maurice Slingerland - Manurewa Boomers Shed who has been endorsed by the national executive to become the new National Secretary.

A position description is available online for the Regional Representative role - RR5 (Otago and Southland) which is still vacant.

Please consider joining in to assist the national body.

The roles are pretty flexible; anyone interested please give me a call to discuss.

Auckland shed deficiency

Many of you will be aware that Auckland is desperately short of sheds on a per capita basis.

I could talk about this for the rest of the day but a brief summary is that since we have decided to be masters of our own destiny by not going for government funding we don't have much of a profile anywhere and we don't have councils - Auckland or any other - "bending over backwards" to provide more land and buildings for our great cause.

We are doing what we can in the circumstances; I met with one MP a couple of weeks ago and will be taking another on a wee shed tour next week (thank you to those sheds you have kindly agreed to host us). One of them is putting forward our case to some government Ministers who may be able to assist.

If you have any dealings with your local MP then please keep me in the loop; it is always good to know who our friends and supporters are!

I'm also talking - thanks to an intro from Terry Moore courtesy of his RDG project - to one particular part of Auckland Council who do seem keen to help.

And on a brighter note, we do have quite a few potential new shed groups in the making, mostly on the rural fringes of Auckland where land and buildings are perhaps slightly more available and the supportive local community exists.

Men's Health Expos and events

There are now several Men's Health Expos and events in the planning around the country.

It doesn't need to involve a cast of thousands - could be as simple as doing a health survey or blood pressure check; anything to get the men talking.

Just one request; when you do do something, please try to take a photo and keep some simple records such as how many men took part and share these with your Regional Rep; every little helps when we are reporting back to our generous funders the Selwyn Foundation....

Big picture planning

Part of the fun of my role is in the zooming in and out between looking after the daily stuff - like the phone call I got at 8 am this morning kindly offering a free scroll saw, the regional stuff - like the Partnership arrangement we are currently working on with one particular District Council (watch this space), the national stuff - like the latest offering of assistance for health related services and the international picture - like the phone calls I have had during the month with my counterparts at shed associations in Australia, Ireland and Scotland.

What I can observe about the latter is that in the same way that all sheds in NZ are different and unique, so too are all national bodies which I have developed in their own way and to match their own circumstances. Amongst it all though I find it really interesting to consider the biggest picture and think about the best way forward for MenzShed NZ member sheds.

From the Secretary

Sheds that have paid their annual sub will have received the 2025 order form for free Cabots products. Each financial member shed is entitled to a combination of Cabots products up to 10 liters per year – has your shed ordered yours yet.

We have heard from some sheds that the donated product goes a long way, they order in 1-liter tins, that size stays fresher longer, from the Polyurethane range (both oil and acrylic based) and Danish oil, giving the shed a saving of around \$600.

If your shed does not use these products why not orders some and give it to the next shed in your region who does.

If we don't take advantage of offers to sheds like this one from Cabots, they might not continue with the offer. What do they say "use it or lose it"

Men's Health Week (MHW)

We had a good time launching the research report at the Hibiscus Shed 9 Jun '25.



Hibiscus Mens Shed kindly hosted the launch of the Edwina Pio research on the first day of Men's Health Week; 9 Jun '25. Unbeknownst to the three gents shown holding the report for the "opening", they all featured in photos on the front or back cover.

Mark Sainsbury and Tim Greene attended from Men's Health Week and led the blokes through the "what's my score" quiz and Elisa from Stroke Foundation came along to do blood pressure checks.

Everything went smoothly and I believe that the shed now intends to have a health-related event every month which is exactly the long-term outcome Selwyn Foundation were hoping for so a big thank you to Geoff and the team.

By the way, did I mention that the primary aim of the funding that we are receiving from Selwyn Foundation is for us to hold a men's health expo or health event in every shed this calendar year?

Read the research report here:

https://menzshed.org.nz/wp-content/uploads/2025/06/Report_Researching-the-health-and-wellbeing-impact-of-Mens-Sheds-on-their-members-in-New-Zealand-FINAL-6-June-2025.pdf

*From Richard at the
Publications' Desk*



publications@menzshed.nz



MENZSHED
NEW ZEALAND

*Fostering Wellness
Together*

Please support our Kiwi 'n' Sheds sponsors



The Great News

The recent publications are now on the website under the heading Library/Publications. They are loaded as Flip books so spread the news around as they make great reading for everyone.

Only the Frogs and Men's Health Expo/Event Guide are downloadable. This has been done to protect our advertisers and the MoU we have with the Australian Men's Shed Assn. for the "Shed Leaders' Manual".

The Good News

Stories for "101 Faces of Menz Shed NZ" are slowly coming in. I have received some great stories telling what the Men's Shed really means to Sheddies. One included an action photo of a Sheddie bungy jumping off the Sky Tower for his 80th birthday.

Please chairmen and secretaries spread the word amongst your members, don't leave it till the last minute. Going down to the shed is not all about making sawdust!

Webmaster

I have added this job to my things to do list. It aligns closely with producing publications so I am relieving Bill Greenwood, who was very happy to hand the position over. Thanks, Bill, for the great job you have done over the years.

The website has some very old postings on it, with some going back 10 -12 years. Over the next few months there will be minor changes to it to bring it up to speed and to look like some of the great websites that sheds have assembled for themselves. If some of your shed information is incorrect please let me know by sending an email to webmaster@menzshed.nz and I will endeavor to correct it. It is up to you all to check your own information please.

I am open to suggestions for help with this job. Thanks

Have a great day at the shed. Cheers, Richard

Region One News

Northland and Auckland

10 Years of the Beautification Trust's Boomer Shed:

Celebrating Connection, Skills, and Community Contribution



Colin White, one of our longest-serving Boomer Shed volunteers, is cutting the cake during the celebration of the Boomer Shed's 10-year anniversary.

The Beautification Trust celebrated the 10-year anniversary of the Boomer Shed this June, their much-loved community workshop in Manurewa. Together, they have contributed to more than 500 community projects and clocked up over 22,000 hours of volunteer work.

Celebrating this milestone goes beyond the pride of woodwork projects, it is about acknowledging the importance of:

- Building connections for people over 50,
- Fostering a space for emotional support and wellbeing,
- Giving back to the community.

Our members shared their thoughts on the value of getting together to celebrate this milestone:

We work with many guys here who are retired and over 75, sometimes people leave for health reasons and you don't know who passes. There is so much value, as we get to see appreciation from the community members and loved ones of members who have passed away." shares Colin White.

We don't always see all the members as some come in only a few times a month, it was a great chance to see people we haven't seen in some time; says Paul Smith.

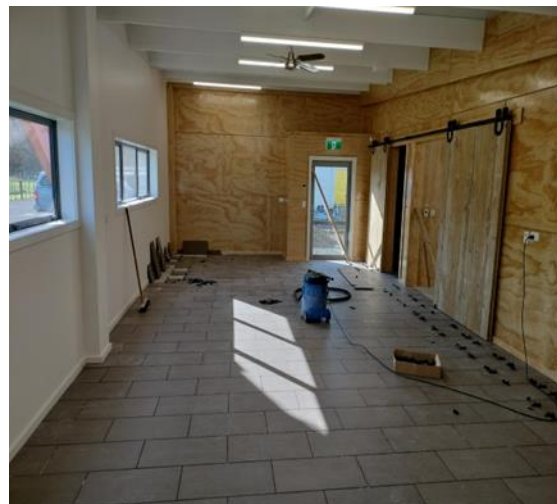
Since opening its doors in 2015, the Boomer Shed has become a second home for a growing group of volunteers who use their time, skills, and experience to support community projects across South and East Auckland.



Time for pen to paper yet again, or rather finger to the buttons. You may have noted that I have missed the s of fingers but believe me it is just "finger" to the buttons.

Our focus over the last 6 months has been the construction of our new facility. To combat the short fall in funding it was decided to build it ourselves. From there the community came on board. The support has been absolutely fantastic. Four retired builders walked in off the street to donate their time. Under the direction of Jeff Riddle, Fred Bonkovich, Fred Brinsden Ian Bagraum and Ted McVerry have put together a valuable asset to the community. The average age of our building team is about 75 years young.

This and the generosity of the community meant that our build has been approximately 55% of our quoted price.





A kitchen donated by a member of the community will be going in at the beginning of August, while the tiles for the floor, which were donated by the members of the Matarangi Menzshed, have been laid by our team. The signage was donated by Coastal Signs here in Whitianga.

We have 2 rooms, 1 of 180 sqm which is the “clean” room, where projects can be assembled. While at the far end is a room of 120 sqm which where the dust collectors will be set up, and will house the saws, routers planers, and sanders. The build will be finished when we finish building the outside toilet block. The walls were all prebuilt and on Monday a team of 8 Sheddies manhandled them outside and erected the building. The only thing stopping them from having the wall and roof put up was the fact that we had to wait for an inspection. The toilet block was built outside we share the site with the Scouts and the local Lions also have a garage to store their bits and pieces who have contribute towards the construction cost.



A couple of enterprising Sheddies managed to slip into the New Shed to build the first project to come out of the shed. Ron Aylan-Parker and Greg Healy are constructing a food distribution cabinet for the Whitianga Social Services. We are quite sure how they did it as at that time there were no machines in the place.

Other happenings today have included our AGM where one of our favourite Sheddies was awarded the Whitianga Sheddie of the year. Brian Jarvie was described quiet, works hard in any way asked of him, and is extremely loyal and respectful towards all members. There is not one member in the shed who doesn't like Brian.



Brian, Pauline Brown. Our 1st President's widow and current President Glenn Schache



Brent Russell

The chair of the Auckland Central Community Shed is a former engineer who lends his DIY skills to volunteer groups, while encouraging others to also get on the tools.

Best Bunnings buy: "Ozito cordless drill driver – we can never have enough in the Shed."



TEAM SPIRIT

Brent: A lot of men find our community shed because they are retirees who are at a loose end, and their wives don't want them sitting at home doing nothing. It's called 'the underfoot syndrome'! Their wife might say, "Get out from under my feet and find something to do", so they come to us.

We have a woodworking area, a welding shop, an engineering bay and lots and lots of tools, so our members can work on all sorts of projects. It's not only retirees who use our shed – we have members ranging in age from 19 to 83, both men and women, and with a range of skill levels.

We do a lot of community work for places such as schools, libraries, community centres, garden groups – all sorts. They come to us when they need something built or fixed, and one of our members will pick up the job. The projects can be big or small – for instance, we created a 'little library' book share box for a community hub, and sharpened 100 spades and axes for a group who were planting trees. Another interesting project we worked on was a model albatross that was built from a ship's deck plugs. The project was for a man restoring the

Toroa steam ferry – he was having trouble attaching the wings. And we help to finance projects by selling donated pieces we've restored.

Our community shed and all the other Men's Sheds in New Zealand (menzshed.org.nz) are not just about working on projects. The focus and kaupapa is on keeping our members happy and healthy. Last year a guy walked in who was very depressed as he'd lost his wife. He worked on a big furniture restoration project for a few months and over time came out of his shell. He's a different person now and it's wonderful to see that change.

It's also a place for us to share our skills. Some people aren't very handy and might need advice to work on a project, so we show them ways to tackle it. Our training program helps people learn to use tools safely – and also helps us gauge their abilities. It may take some new members five times to get their project right but their sense of accomplishment at the end is the best bit. ●


If you're involved in a community shed, contact the activities organiser at your local Bunnings store to organise a sausage sizzle fundraiser.



The Shed's woodworking area boasts a vast array of tools.



Furniture restoration is just one of the many rewarding tasks members enjoy.

A photograph of a man with white hair and glasses, wearing a green and black plaid shirt and dark overalls, working on a light blue cabinet. He is using a power drill on the cabinet's door. The cabinet is on a red metal shelf. Above the shelf, there are various boxes and tools. To the right, a yellow hard hat is hanging on the wall. In the background, there are stacks of wood and a fire extinguisher. The scene is a well-lit workshop or shed.

Brent puts his favourite
drill driver to work.

"The Shed is a place to socialise,
keep active and feel useful"

Brent Russell/Auckland Central Community Shed chairman

Settlers Albany Blokes Shed

Not a lot to report this quarter other than some personal projects.

Brian, our shed carver, has been at work again, this time producing a piano complete with the player.



This is a wooden pot I turned from reclaimed timber found on his property years ago. He just wanted something simple to be turned from it.



Bryant made this coffee table for a family member using laminated pieces. He then varnished it with Norski varnish. After applying several coats, he finish-sanded with 2000 grit wet and dry sandpaper and polished with Brasso, resulting in an excellent finish. Norski is a varnish we have had a lot of success with and can highly recommend it.





Richard is a new member of our village and shed who has experience in wood turning and has completed several projects. He is not afraid to try all sorts of different combinations and above are a couple of his latest items.

Blokes Shed at Selwyn Village

At Selwyn Village, we have about 25 members, men and women, who have passed the H&S orientation and are thus allowed access to the “shed” key.

While we do not hold regular meetings, The Blokes Shed is still holding their regular Monday 10am – 12pm sessions for those who wish to help out with some projects.

Current Projects:

- Busy Boards, for Lavender Cottage & Ivan Ward Centre Dementia Units, and local Safari Playgroups.
- Stick Library, for Te Toi Uku, Crown Lynn & Clayworks Museum in New Lynn
- Barrier frames for mobility scooters parking in basement garages and against buildings.
- Post Box refurbishment. (we have our own Post Boxes within the Village)



The Blokes Shed at Selwyn Village plays an important role in the prevention of social isolation. This is especially important when your spouse passes, as loneliness can quickly lead to a dark place known as depression. Helping out around the Village and socialising can lead to new friendships and a sense of achievement and satisfaction. Making the Busy Boards was great fun. Handing them over to the kids at the Safari Playgroup was also great fun, watching the children explore all the different items and seeing their smiles gave us warm feelings of joy and pride.

Region Two News

Waikato, Bay of Plenty and Gisborne

Matamata Menzshed & Matamata Intermediate

MENZSHED
MATAMATA

In late December we received an email from a young man at Matamata Intermediate asking if we could build a garden box for the Enviro class to add to their school garden.

He drew us a plan of what was required and as with all requests there was not a lot of information.



This was the plan we were given. As you can see there was not much to go on

We contacted the school and got them to give us the size they wanted 1600 along the top x 800 down the sides an easy build.

The school wanted us to provide the box prefabricated so that the children from the class could help to put it together and place where they wanted the Garden to be. We duly built the garden box and took it to the school. As you will see there was a lot of help from the students.

The school has a special Class for any child that is interested in the Environment and they allow these children to grow their own vegetables and learn to build a compost bin. They are taught by a woman who works from and with the Hobbiton Gardens

A good Exercise between the local school and the Menzshed Matamata



Te Awamutu Community Menz Shed

It is often said the way to really get to know someone is around a meal table! Our variation of that one is to have a sausage sizzle around a work bench! Our recent barbecue was well attended. At one point, there were at least five different conversations going on, and those not talking were busy enjoying the light lunch. These are now going to be a monthly occurrence.



There has been some great work being completed in the workshop, with the laser engraver adding the finishing touches. A classic example of this was the recently completed box with a frame and two roses engraved onto the lid, transforming it from just another polished box to something unique that will be treasured by its owner.

The major focus on control of pests in recent years, partially driven by the Pest Free by 2050, goal has seen us produce a heap of traps for several different organizations. This has been a solid money spinner for us. This may not always be the case as the number of pests reduce! As a sideline we will make a few extra as a means of adding another item to sell in the shop. A recent display at the Hamilton Museum featured one of our traps amongst the undergrowth, complete with the Menz Shed Te Awamutu brand for all to see! Who knows where our work will end up!



We've had a few cool and wet mornings of late in the Waikato and on arrival at the shed, it's been great to have the blazing log fire and enjoy the warmth. A special thanks to Sheddie Murray who has been lighting this in the morning for us to enjoy! The best thing is that we have no shortage of firewood to keep it going!

Region Three News

Taranaki, Manawatu, Whanganui, Hawkes Bay and Wellington

It's been a busy few months here at the Hawera Menzshed.



In summer and through autumn, we partnered with a local business - Corrigan Electrical after we hit it off when they did some work for us. We secured a good discount and as part of their company values where they give back to the community, they organised a Marathon for Menzshed. Their entire team collectively ran a Marathon for us and promoted the event over a period of about 6 weeks. The club's profile grew and they raised a whopping \$3000.00 for us.

We also met and secured a new

member and committee member through the relationship who has helped us secure several grants to help our club achieve our goals. We've also been able to work together to get our test and tagging done and got some great new projects in the door along the way. This might be a good idea for other clubs. We're looking forward to working together more.

We held a Mens Health week event where two health professionals presented on really topical subjects with over 50 people in attendance - members of the shed and in our community. We were also able to secure donations which meant all our guests were served lunch and desert. We've had awesome feedback on the event.

Men's Health Week Speaker Event

Proudly brought to you by:



Dr Tom Dawson and Nurse Practitioner Lisa Thompson

Topic: **Take charge of your health**
12noon - 1pm Thursday 12 June 2025
A & P Showgrounds - Burnside Avenue
Menzshed Members Free - Non Members \$10
Light BBQ lunch included

RSPV 0274725899 - Rachel



We've worked hard on uplifting our Health and Safety framework and we've created a board where we can see what projects we have going on and who to thank for them.

Winter traditionally sees projects slow down and attendance decrease and this year is much the same, but we've still had steady work restoring and resurfacing much loved items for the community.

Lastly, one of our talented members has painted a very large piece of art of our treasured mountain and donated it to our club. We are selling tickets for \$2 each. 250 tickets and drawn once all sold. So, if you'd like to help your fellow club out by purchasing some - reach out to Rachel – 0274725899





Only 19 more Fridays till our Xmas Shop opens to the community, so Malcolm is busy making popular items, and as always new items to keep the public coming back to see what new items we have available.

Each year we introduce at least two new creations, one of those this year is the snowman, another one we have shared with our brother shed in England.

And here's one of their festive creations in return.



Keep an eye out for the November National Newsletter where we will share a video link to the full range of gifts and decorations available.



Rural townships are renowned for their community-minded groups and Martinborough is no exception. Most days when we are open, there is a regular stream of visitors with requests for projects and repairs. As a tourist and wine center, we have recently equipped the Shed with equipment to professionally sharpen chefs' knives and horticultural tools.



A major project has been the construction of penguin shelters for the south coast. This job, done in conjunction with the Aorangi Trust, will see over 30 new shelters built to complement the 30 we made last year. Lucky penguins – the south coast is a notoriously wild place for them. Projected next will be upgrades to dozens of predator traps.



Among the “fun” activities has been a bespoke coffin, designed for one of our member's future needs, a chess set and board, cleverly milled hinges for a member's Lamborghini kitset home-build (so far about five years in the making).



continued

We are fortunate to have the old Martinborough Courthouse as our base, with the addition of a massive “container and cover” engineering and woodworking shelter behind. It is a challenge to keep the aging Courthouse in good condition, but we have the right guys to do whatever needs upgrading. Recent additions have been multiple heaters (a blessing in the minus three-degree temperatures lately, as well as a hot water supply to the outdoor washroom.

Region Four News

Canterbury and Westland



We weren't quite well organised enough to arrange a 'Men's Health Expo' for the designated week in June. We did however use that as the start point to arrange health awareness briefings beginning with checking the contents of all of our first aid kits (we have four across the site) and our defibrillator, followed up with a refresher of our emergency procedures, first aid and evacuation response.

During June until August, we've invited guest speakers from different health organisations to give 'smoko break' presentations with around 30 members turning up to each.

The first was from Marthy Cloake from Heart Foundation NZ. As well as in informative talk with plenty of Q & As, Marthy carried out blood pressure monitoring of all members with the offer of follow up consultations at her office.

Two weeks later, Rosie Chambers of South Canterbury Alzheimers NZ, came in to explain, in layman's terms, the things we can and should do to help stave off dementia. She gave us an insight into the ways we can help those who are suffering from dementia with tips and knowledge gained from her time as a psychiatric nurse.





In July we have a visit from Katie McCoy of Sport Canterbury. Katie and her team inspire older people to join their 'Active for Life' fitness programme designed to maintain balance, fitness, muscle tone and joint health.



In August one of the Dietician team of South Canterbury DHB will come and talk about diet and good health. Obviously, on that day our usual smoko snacks of pies, cakes and cookies will be replaced by celery sticks and carrot croutons!



I tried to buy one on Temu, but they must be out of stock, really good for increased productivity being able to drill two holes at once.

Write back and let us know if you have one in your Shed, LOL

Region Five News

Otago and Southland

The **Taieri Blokes** Shed is planning a Health Expo on the 9th August 2025 at the Presbyterian Church Hall in Mosgiel.

Depending on how big you wish to go

they do need some planning. Early on I managed to contact one of our local members of parliament, Hon Mark Patterson to be our guest speaker.

He accepted but said he didn't know much about our shed movement so I invited him to visit our shed which he willingly jumped at the idea.

In early June, Mark and his secretary enjoyed our hospitality for morning tea followed by a fully guided tour of our shed. Both were very impressed with the

projects the men were doing and took time to speak to many of our members which they appreciated and what the shed movement does for our members health and wellbeing. Following that visit Mark has been in touch with David Broadhead to see if he can further assist in helping our shed movement at National

Level. Our members are still buzzing about his visit so maybe, this is something that other sheds could do in their area, inviting their local MPs to their sheds

to foster, encourage and show them how our movement keeps our ageing population active and out of hospitals.



TAIERI
MEN'S HEALTH EXPO
organised by
TAIERI BLOKES SHED 

9th August 2025
9:30 AM - 1:00 PM
Mosgiel Presbyterian Church

It's a great opportunity to speak one-on-one with stallholders about your own health concerns and learn about the next steps you can take to stay on top of your wellbeing.

Prostate Cancer ♦ Hearing Tests ♦ Stroke Foundation
Knox Podiatry ♦ Diabetes ♦ St John ♦ Medical Bracelets
Mole Map ♦ Hearing Loss ♦ Blood Pressure ♦ St John
Alzheimers ♦ Diabetes ♦ Podiatrist ♦ Grief ♦ Mental Health
♦ Movement & Mobility ♦ Multiple Sclerosis

Speakers (11am): Hon Mark Patterson & Graeme Gale

Programme: Starting from 9.30am onwards
9:30 Any time onwards
10:00 Morning tea onwards
11:00 Speakers
12:00 Gold coin BBQ

Proudly Supported by: Property Brokers Mosgiel + others to come



Included are 2 photos, one of Mark speaking to our shed members at morning tea, and the other is our program for the Expo.

Will have 19 stall holders where men can speak to one on one and is open to all men so looking forward to a busy day. An interesting lineup

Most sheds around the Dunedin area will be invited also as this will hopefully allow more sheds to hold some form of health days.

Region Six News

Tasman, Nelson and Marlborough

Burning passion for Picton Menz Shed



Ian Carmichael and Bruce Taft splitting former pallet wood into fundraiser kindling.

Photo: William Woodworth

Harnessing know-how in trades from across years of collective work has resulted in the most efficient kindling operation yet at the Picton Menz Shed.

The popular winter fundraiser, which repurposes heat-treated pallets into cheap kindling and recycled nails, has benefitted from new additions to the process in both labour and technology.

A kitset shed – built by Menz Shed members and funded by Pub Charity – will now be home to the pallet-to-firewood fundraiser after growing too large for the existing facilities.

“All of the Menz Shed’s find their own niche with fundraising, so we chop up pallets into kindling and sell it through our friends at the Four Square here in Picton”, says member Chris Davies.

“Non-painted, heat-treated pallets either come to us from regular donors, or we keep an eye out around nearby businesses to cut up, and everything gets recycled.”

Menz Shed members form a disassembly line, dismantling pallets, extracting nails, cutting wood to shorter lengths then splitting it into kindling.

As part of their efforts and utilising their metalworking and mechanical knowhow, members built an automatic splitter to cut the lengths down into kindling lengths.

“It was all made in-house, actually going too fast for us at some points, so it’s getting some improvements”, laughs Chris, “but we can also use the buzzsaw to cut them down to length too.

“There’s even boutique firewood requests –a lady asks for all the end block pieces that suit her pot belly stove in return for a morning tea shout, and we’ve given a good few community tasks a good go – such as wooden name badges, and the tee markers at Picton Golf Club.”

Fellow Menz Shed member Timothy McCaffrey said the extra bags of firewood – up from 660 last year – are thanks to the collective efforts of members in building the shed and splitting the kindling.

“We’ve gone from 36 members to 52 – admittedly number 50 was a member’s dog – but we’re now actually struggling for space to have morning tea, so having the Pub Charity funding allow us to make a firewood fundraiser headquarters is fantastic.

“In all fairness, we’re pretty partial to doing any jobs in return for a morning tea shout.”

Four Square Picton owner Rachael Seddon said the good cause behind the kindling contributed to their staff having to consistently restock the kindling shelves.

“It’s a great cause, a great community group of guys, and we probably sell at least 50 a week which all goes back to their efforts - so we’re pleased to support them”.

Pick up Picton Menz Shed Kindling at Picton Four Square for \$10.



Photo: Chris Davies and Timothy McCaffrey of Picton Menz Shed with one of the expected 800 bags of kindling which they will sell this winter.

Photo: William Woodworth

Menzshed NZ acknowledges William Woodworth and Marlborough Weekly for their permission to use this article and images.

Report from Picton Community Men's Shed

Our shed has just achieved 50 members of whom about 20 are active. Our current task is completing a shed for our firewood project. We obtained a contract to provide bags of kindling which are sold on our behalf by the Local 4Square Supermarket.

Seven of our members recently attended a meeting hosted by the Havelock Men's Shed. Following lunch and a few reports 38 Marlborough members enjoyed a very interesting tour of the Freshwater mussel factory. Some of us were lucky enough to score a feed of mussels.

Some of our older and frailer members come for morning tea or lunch and we don't otherwise see them so we decided to set up a social program. This comprises monthly visits to interesting workshops and museums as well as monthly evening presentations.



So far, we have visited a private car museum, an impressive private model railway, and a private motorcycle museum. This program will continue until the end of the year.

Monday evening talks have been given by members as follows:

- Retired Police Officer reminiscences
- Retired RNZAF Officer (Service in Iraq and teaching English in the Czech Republic)
- Member-Cycle touring in Europe and a boat trip to the Bounty Islands
- Member-Teaching English in Japan.
- In conjunction with REAP we have organised an evening cooking class.

Don Macdonald, Chris Davies, John Welch (Social Committee)

Information transmitted in this newsletter is done so in good faith.

MENZSHED NEW ZEALAND is not responsible for the actual wording used by submitters, nor are we endorsing products or services of advertisers, unless that statement accompanies the offer.

We do welcome feedback from sheds on their experiences so we can share that information with others.

Editor

Next Newsletter – August 2025

The next newsletter is due for publication mid-November 2025. The deadline for articles for that newsletter will be 5th November 2025. When you have completed an interesting project or done something of interest with others down at the shed, send us an article. Don't wait for the deadline as it gives the editor time to arrange articles. It is always good to see pictures with an article. **Format for article please use Word and Jpeg for pictures** as these are easier to work with. Please limited article to around one or two maximum A4 page/s.

Please do not send your whole shed newsletter, as I will only publish single articles sent.

Send articles to support@menzshed.nz Cheers John Bush Support Services and Newsletter Editor

Shed survey

Recently an online survey was sent to Mens Sheds about a quantity of dust masks that had been offered to Menzshed NZ,

Thank you to all the sheds that responded - 65 at last count, we will upon arrival of the masks advise sheds in order of replies the logistics of obtaining their allocation of masks.

We also asked the question about any known offers of cheaper power from NZ power companies. It appears not 😞

But for what it's worth a number of sheds did say that Mercury Energy "power shout" is something to look into.



Sponsors & Supporters of Men's Sheds

Visit our web site to find out more about each company and the benefits they provide to member sheds.

www.menzshed.org.nz/membership/benefits/