



MenzShed Kapiti Incorporated.  
Registered Charitable Entity Nr  
CC45795  
Secretary, 16a Major Durie Pl,  
Waikanae Beach  
5036 Telephone (04) 293 7728  
Email: menzshed.kapiti@gmail.com

NEWSLETTER – June / July 2024

## **From the Chair**

No. 152

Talofa lava

As the date of our AGM rapidly approaches (Thursday 29 August 2024) work has started in regard to succession planning, the appropriate management and governance model that will ensure we continue the success story of our Shed.

The work started with a workshop attended by the Committee and Shed Supervisors that was facilitated by Mr. Chris Jackson, a management consultant and former Shed member.

For the ideas and questions that came out of that workshop (see attached 'bubble slide').

Following the workshop the Committee met and considered the ideas and questions. We asked the question "What needs to change?" (See attached "what needs to change slide") and also ("The idea").

A draft governance, management and leadership structure was also developed. (See attached "Possible Structure slide")

A briefing on the workshop and committee deliberations was held for members at the Shed today. As result more ideas and suggestions were made and noted. My hope is that the discussion and awareness of the work we have started continues and will lead to action being taken.

If you have any ideas or suggestions about this work, please let me or other Committee members know so it can be factored into deliberations.

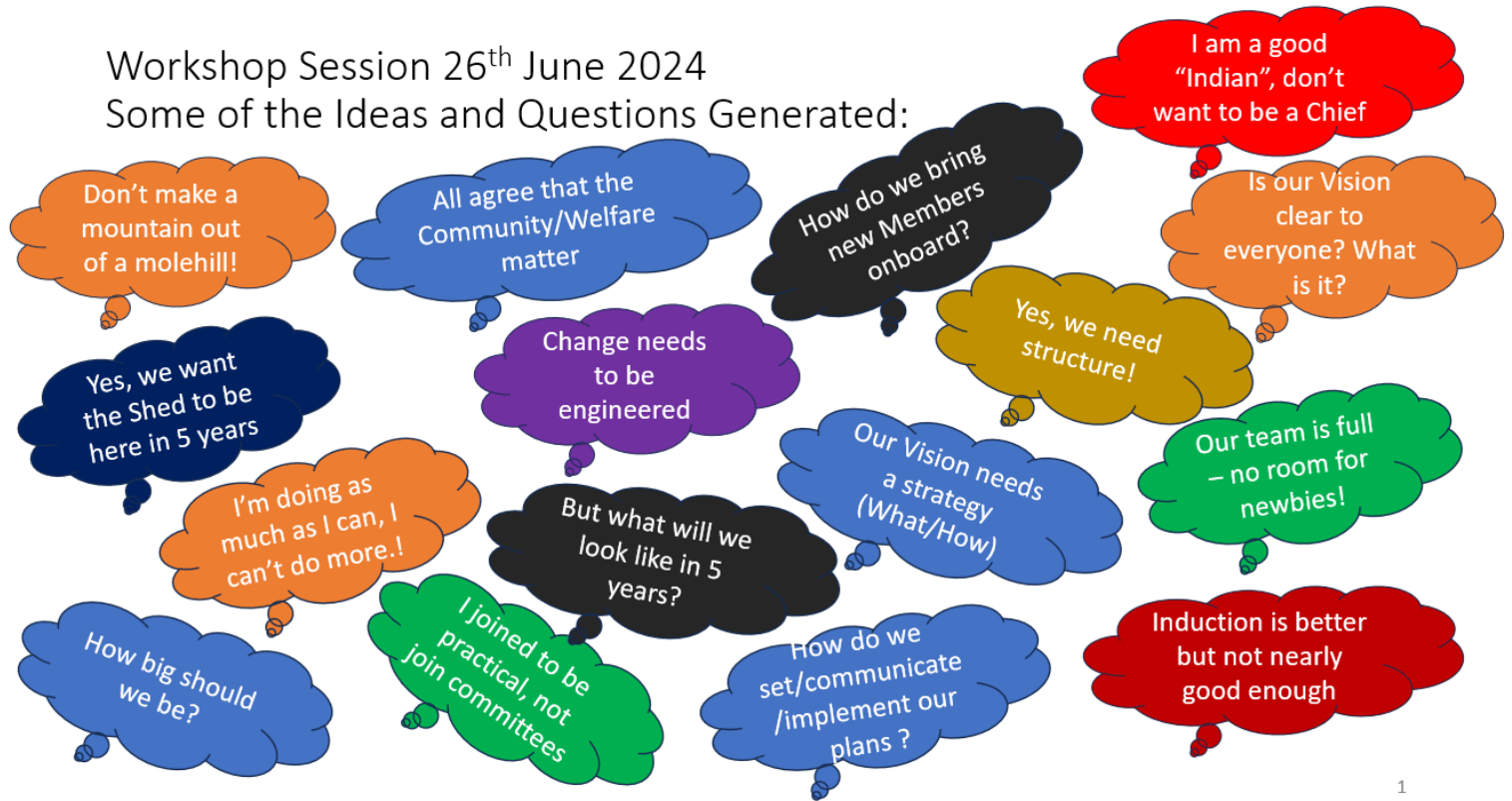
Soifua

Tony A

## Workshop Slides

Workshop Session 26<sup>th</sup> June 2024

Some of the Ideas and Questions Generated:



1

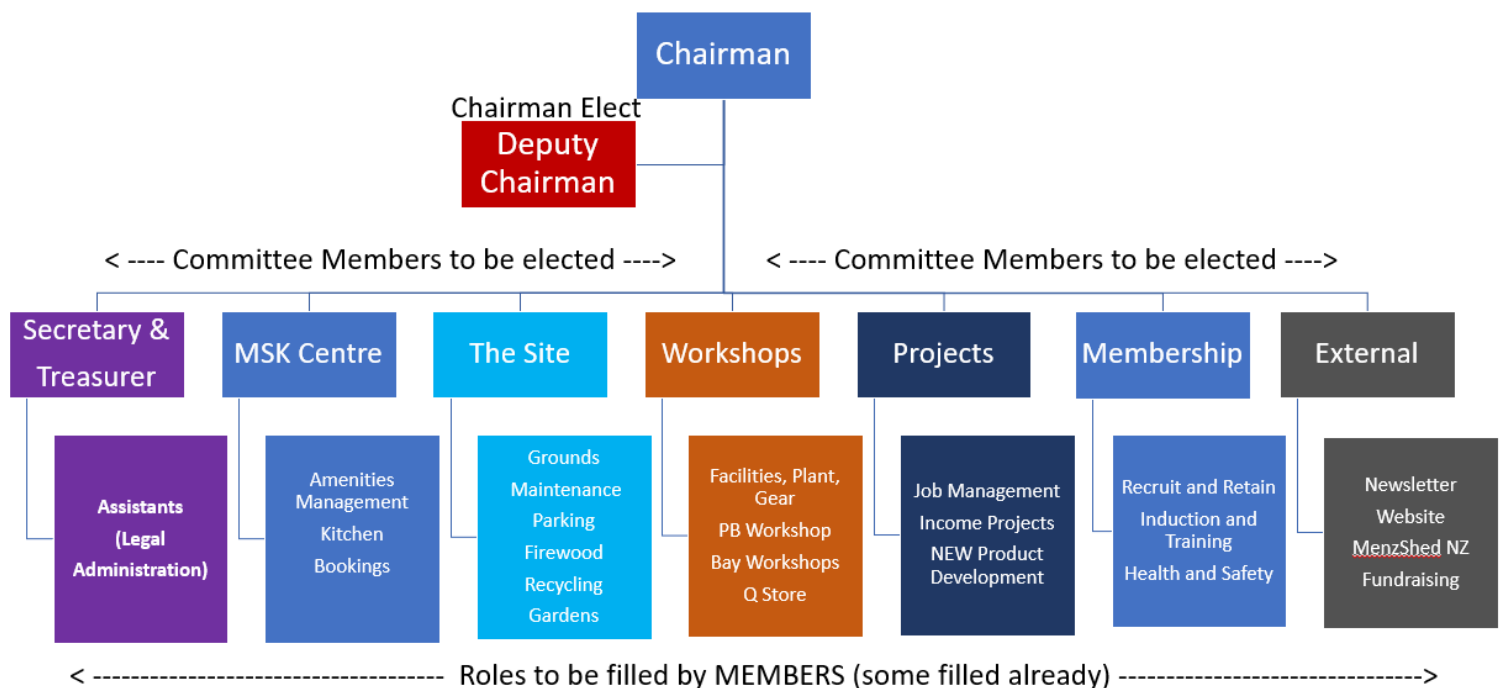
## What needs to Change?

- The COMMITTEE are responsible for empowering, resourcing and planning (governing) rather than managing day-to-day issues.
- The COMMITTEE wants to delegate responsibilities to Centre Leaders and provide resources to make them even more appealing.
- **Spread the word: If you join the Shed, you need to play your part.**  
**Personal projects must be balanced against those that sustain the Shed.**
- Member Welfare, Supporting our Community remains our focus & Safe Environment stay paramount!

# The Idea:

- Don't change whatever the Shed currently does well (AGREE on this),
- Focus on improving member access to space, jobs, personal projects, fellowship and community outreach.
- Create a Centres of Responsibility structure – AGREE on the most important ones,
- Involve more members in managing the Shed's activities, delegate them the resources and authority to do their job. Make every effort to support them in their area of management,
- Over time, this idea should increase the pool of Members willing to assume a Governance Role.

## Possible Structure.



## Upcoming events

Just a memory jog of what Menzshed Activities are happening in the foreseeable future.  
Make sure you have them in your own Diary.

Event	Date	Where	Comment
<b>Recurring Events</b>			
Committee Meetings	4 July 2024	@the Shed	10.30am
Sharpening tools	Last Thursday of Month	@the Shed - regular event	By Gordon and Ray  
Electric watch battery replacement	Second Tuesday of the Month	@the Shed - regular event	Mick Mc will be bringing his wristwatch tools to replace batteries for a small charge 
Fresh Scones	Last Thursday of Month and whenever there is a birthday shout or any other excuse!	@the Shed - fairly regular event	Hans and his apprentices will be producing superb scones fresh from the oven, or for anyone's birthday shout 
AGM reports due for 2023-4	18 July 2024		
Nominations for committee for AGM	26 July 2024		
AGM	29 August 2024	@the Shed	

## Contact Details

Name	Position	Phone No	Email Address
Tony Annandale	Chairman	020 41745745	Chairman.MenzshedKapiti@outlook.com
John Moriarty	Treasurer		Treasurer.MenzshedKapiti@outlook.com
John Moriarty	Secretary		Secretary.MenzshedKapiti@outlook.com
Roger Currier	Newsletter Editor	021 991617	Currier.Roger@Gmail.com



## Around the Shed



*The firewood gang Wayne W, Charlie L & Barry I, busy making coffee tables out of old pallets. The scrap timber is sold as firewood. The score so far is Coffee tables is 0% Firewood 100%*



*Anthony G with succulents for sale.*



*The weed mound is still growing in the new garden*



*The new Menzshed electric nail file, it will do both nails and fingers!*



*Mike Mc cleaning up in the metalworkshop.*



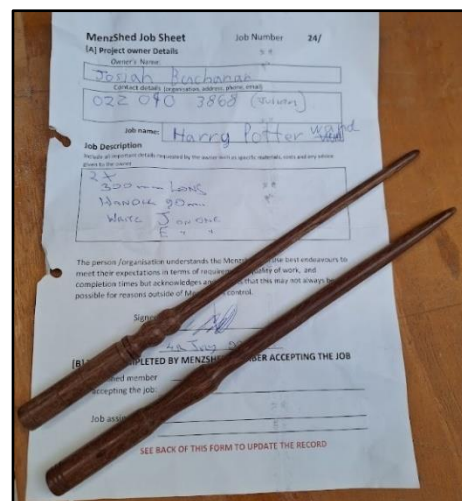
*Gordon Mc happy in his sharpening*



*Robbie Mc has to keep making the tui feeders to use up the supply of wine bottles*



*Josiah B (aged 7) came with his Grandfather Julian Buchanon, to pick up Ruru nesting boxes when Josiah announced he wanted a Harry Potter wand. He filled out the form himself and then told me he wanted two wands, one for himself and one for his younger brother, Eben 4½ years. A quick wood turning job over the next weekend and a little very old jarrah and a couple of wands appeared. A letter on each, a J and an E and they were complete. The following Thursday 11th July they returned plus Eben both boys in Harry Potter gowns and they excitedly took delivery of their wands. It was such a pleasure to work for Josiah and to see his pleasure getting his wand. After a warning to only cast good spells two happy children left. Ian P*







*Ray W with his finger stuck*

### **A Story I heard when in the UK**

A woman in purdah on a train was talking to her son in a foreign language.

Another passenger got very annoyed and interrupted saying 'when you are in Britain you should learn to speak English, not some foreign language.'

Another passenger interrupted and pointed out that in fact she was speaking in Welsh and as the train was going to Cardiff it was very appropriate that she did speak Welsh. Did the other passenger speak Welsh?



*Panoramic view of goings on in the Workshop.*



*The project is to make a dinosaur as per one borrowed; with 18 separate pieces (tail piece broken); By Alan C and Ken G*





*You may remember this house being moved across the shed car park. It is now in Poplar Ave, Raumati*



*David M with our new letter box. Now we can receive Christmas cards!*



*Stool tha had a broken leg beautifully fixed by Alan C*

***This is an extract from Kapiti council's weekly update  
Alan C made the battery recycling box***

**A whole year of battery recycling – ka pai Kāpiti!**  
It's been a year since we kicked off a battery recycling trial at some of our libraries! Over the past 12 months, we've collected 27 buckets of domestic batteries, totaling over 540 kilograms – that's the weight of a grand piano diverted from landfill. Ka pai!

You can drop off household batteries at our purpose built recycling stations at Paraparaumu and Ōtaki libraries – Waikanae, you're next! From there, we send them for recycling – about 99 percent of the parts in domestic batteries can be reused in new batteries and building reinforcing rods.

Accepted batteries include lithium-ion, nickel cadmium, alkaline AA/AAA, C, D, N batteries, and silver zinc hearing aid batteries.



## **Click on this link!**

I had positive feedback on the article in last month's newsletter on links to YouTube videos. Here are some more links I found interesting.

If you find any gems on the Internet, please share them and I will put them up here, (if appropriate)! Below is an explanation on how to get the link to a YouTube video. They don't work on a printout!

- **How aluminium is recycled in India**

If only we did it this with recalcitrant teenagers, it would save having boot camps!

### **[Recycling Aluminium in India](#)**



- **How to make carved table mats**

I have often wondered how these mats were made – it's so easy when you know how.

### **[Making carved table mats](#)**



- **Cutting Edge Engineering**

Cutting Edge is an Australian single man firm which specialises in repairing parts to heavy industrial machinery. What he does is way above my head but is well explained and fascinating to watch. – one of my favourite YouTube channels. You will see his dog and people are constantly sending it things to chew on!



### **[Saving a digger cylinder rod - part 1, getting the nut off](#)** **[Saving a digger cylinder rod - part 2, making the new nut.](#)**

If you like any of the above videos and want to see more from a particular developer, click on the Subscribe button, (under the YouTube), screen it will link you to all their videos. The YouTube algorithm will give you links to more similar videos.

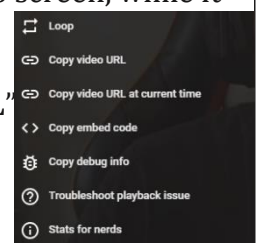
Initially tested the links and they did not work so after googling the problem I found I needed to clear the browsing data in my Internet browser as follows:

Chrome browser (Press Ctrl+Shift+Delete simultaneously)

Other browsers (too complicated to explain Google it)

### **How to get the link to a YouTube video.**

Right click anywhere on the video screen, while it is playing, and a black box like this should open up. Left click on the second item, "Copy video URL" and you should be able to paste the result into an email.



It should look something like this "https://youtu.be/xX31J9cBR2o". This is the link. Send it to me at [Currier.Roger@Gmail.com](mailto:Currier.Roger@Gmail.com). I will check it out and put it in the newsletter if suitable.



## Wolf Statue Deterrent – By Terry J



1



*In January 2024 the KDC installed new playground equipment at the Awatea Lagoons playground at Jade Lane. Within a month of it being installed the concrete pad in the centre of the playground was heavily contaminated with geese droppings. These droppings are a real health hazard to children as they can contact salmonella and also have their clothing soiled. Repeated contact was made by locals to KDC stating the problem. I contacted the KDC Team Leader, Environment & Ecological Services and requested permission to erect wolf like black statues as a deterrent.*

*The Southwards Car Museum kindly lent me their wolf template as they were successfully using them as a deterrent. I did inform KDC that these wolves would be constructed at the MenzShed and they gave permission on the basis they were placed in areas so as not to interfere with lawnmowing. Using recycled plywood, I have now built 8 wolves. As well as placing these strategically around the lagoons, I also used netting and waratahs from home to block the passageways the geese had made to waddle from the lake through the rushes to the park grounds. So far it has been a 100% success, fingers crossed I can keep these geese at bay.*



*Terry J in the process of making a wolf*

### **A story we heard from our guide when we were going around Europe**

She had been guiding some American tourists around Texas and Las Vegas. She said to them why don't you go to Europe and see the real Eifel tower and Palaces.

One American responded saying "Europe is too dangerous – the police don't carry guns!"

## Combined Menzshed & Waikanae Lions Club – Stoat & Rat trapping programme

Stoat numbers along with Weasels, Rats and Ferrets are on the increase in the Kapiti Coast.

One significant cause for this growth in these predators is the Expressway running North South through our community. Stoats are using the new cycleways and walkways that run parallel to the expressway as an easy way to migrate deeper into the Kapiti Coast.

If you have walked or biked from Peka Peka to Waikanae you will have seen the large population of rabbits living on both sides of the track. These are a favourite food for Stoats.

DOC describes stoats as 'public enemy number one' for Aotearoa's native birds. They are relentless hunters and have a significant effect on species such as wrybills, the New Zealand dotterel, black-fronted terns and young kiwi. Only about 5% of Northland's brown kiwi chicks reach adulthood, and according to DOC their biggest threats are predation from stoats and feral cats.

Birds that nest in holes in tree trunks such as mohua, kākā and yellow-crowned kākārīki are also vulnerable to stoats.

Alf Clear was motivated to propose this environmental program, to the Lions and the Menzshed (Alf is a member), after he sighted two Stoats on the cycle track just north of Te Moans Road.

NZTA, who have jurisdiction over the land either side of the walkway, were approached by Alf requesting permission to run a trapline and agreed to his proposal.

The initial proposal is to run a trap line (subject to NZTA approval) from the end of Pururi Road by the expressway, north to Nga Manu. This is approximately 3.5 kilometres. There is an existing trapping program along either side of the Waikanae River.

[Predatorfreenzorg.nz](http://Predatorfreenzorg.nz) recommends for this to be effective a trap should be set every 100m. This requires about 30 traps

The Menzshed made the 30 DOC200 trap boxes and the Lions funded the purchase of the mechanisms, baits and misc. items

Training in the setting and positioning of the traps will be required.

Volunteers will be sought from both the Waikanae Lions Club and the Menzshed to check and reset the traps on a fortnightly basis.



*The completed traps and the Menzshed and Lions team who manufactured them.*



## **Where I have been?**

You may have noticed my absence from the shed recently, or perhaps not! Well, I have been away on holiday to Europe for the past 6 weeks, travelling around Central Europe, attending a wedding and visiting friends and relatives in the UK. The reason I am writing this is that the world has changed since the last trip, and I want to set it into print whilst I remember and to give anyone considering going some guidance.

This article is about the changes that I noticed in Britain but many of them were also happening in Europe. Overall, we found people were wonderful, kind and helpful. Food was good, service in shops and restaurants was great and we were very comfortable in whatever country we visited. Here's what we found has happened in Britain.

### **The Good News:**

- Cheese, pork scratchings, pickled eggs, pork pies, mushy peas, decent fish and chips, beer that is not frozen cold and tasteless, and Guinness are fantastic. Oh you Kiwis don't realise what you are missing! You can buy New Zealand wine in Tesco's supermarket for similar prices to NZ.
- Eurostar: We travelled into Britain from Amsterdam by Eurostar train. Our passports were checked at the station in Amsterdam (because of Brexit), and we were asked the usual questions, reason for visit, how long were we staying, did we have a return ticket etc. Then we got on the train. It's smashing, very modern, not like the old British Rail trains. They served us morning tea and an aeroplane type meal including alcohol. Service was lovely and friendly; the train goes through the channel tunnel and goes like the clappers. Recommend it.
- London Underground: The journey ended up at St Pancras station, very modern and clean and has connections to the London underground trains. These days on the underground you don't buy a ticket, just flash your credit card, (or Google Pay etc, see below), to the ticket barrier, (touch enabled card essential), and remember to touch off when you get to your destination, or they will charge you the full train distance.

### **Significant changes that are happening and some bad news:**

- You don't need a credit card, just get Google Pay or Apple Pay app on your mobile and flash that instead. It's now quite normal to pay for a pint of beer or a coffee in a pub or elsewhere by Google Pay etc. Some shops do not accept cash so make sure your card is ready for touch or get Google Pay etc. If your phone is too old it may not handle Google Pay etc so check it out before you go.
- Google Pay and Apple Pay are apps that run on your mobile and when you use them to pay they automatically debit your bank account and save a receipt on the phone - similar to flashing a credit card, except that you use your mobile. This is the way of the future whether you like it or not - when I went to China five years ago there were times I could not pay with cash or my credit card - everyone was flashing Ali Pay (Alibaba or Ali Express on their mobiles).
- Travellers' cheques are no more - haven't been for years! Do tell your bank you are going away and which countries you are going to. You don't need lots of cash, just a few coins and small notes. Everything else is credit card or Google / Apple pay.

- Some restaurants (only a few at the moment but it's a trend), now have an optional system of ordering food, at your table, by using your mobile.

You scan the QR code, (see right), using your mobile and it takes you to a priced menu where you can click on the items you want and pay

online without having a waitress take your order. Currently it will be delivered by a waitress but watch this space for future options.



Try scanning the QR code in the above image and you will get the shop menu. Service may be a bit slow if you are doing it from NZ! If your mobile won't scan QR codes you need to download the QR reader app.

- Roads are very busy, you will find traffic lights at some roundabouts and speed limits are strictly enforced with some limits in towns and villages, (particularly in Wales) at 20mph (32kph).
- If you drive a **non**-electric car in central London, without paying the Congestion Charge tax, you will be fined, (even if your car is a rental – you will be charged through the rental company).
- Things you are not used to paying for are now often charged for:
  - air at garages, particularly on motorways.
  - public toilets
  - water in restaurants
  - just dropping someone off at Heathrow, even without parking – see pic.
- GST / VAT is 20% on most things but not some foods. If you are buying a coffee you will be asked: “In or Out”, If you have it in the café you pay an extra 20%. There is no VAT on cold takeaways but there are on hot takeaways??
- I noticed our hire car did not have a road tax licence or an WOF (MOT) certificate, then realised that no cars had them displayed. It's all recorded with reference to your number plate and the police have scanners, including on motorways, so you are being constantly monitored. No getting away with ‘I was going to get my MoT, (Wof) next week’ or ‘It's in the post’.





Plus a special mention of support of our MenzShed Kapiti backers, local businesses, supporters, and sponsors.



A Roof Over Our Heads



Supply of toilet &  
Plumbing Items



Serious Site Earthworks



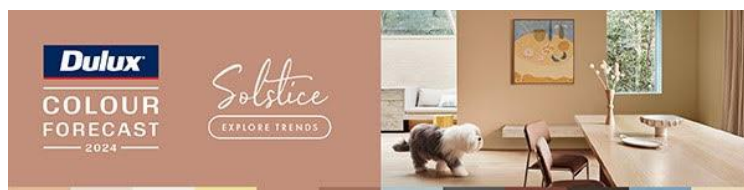
A Heatpump For Our Comfort



Waikanae Charter  
Club Community Grant



Electrical Apprentice Manpower



*We receive 10 litres of Cabots stains annually from*



Printing Our Brochures



Driving The Website



Stair tread edges and  
trims

Plus that ongoing support for our projects and community activities



Boys Toys and Just Stuff for Community Projects

Remember these magnificent people when you plan your next special project