



MenzShed Kapiti Incorporated.
Registered Charitable
Entity Nr CC45795
Secretary, 16a Major Durie Pl,
Waikanae Beach
5036 Telephone (04) 293 7728
Email: menzshed.kapiti@gmail.com

NEWSLETTER – February 2021
No. 134

Yet Again – Nearly Out Of Lockdown!

Well, I thought we were coming out of lockdown! Trust Auckland to give us another scare. Here's hoping we can get the jabs before someone else tries to escape from Auckland.



Here's a picture of what too much lockdown does! It's a sad case, he was so unhappy - he had run out of carpet to vacuum! I won't tell you who it is – I just want him to know he has our sympathy.

Forthcoming events for your diary

Just a memory jog of what MenzShed Activities are happening in the foreseeable future. Please make sure you have them in your own Diary.

Further details will be added as they become available.

Event	Date	Where	Comment
Open Day / Garage Sale	Sat 20 th March	@ the Shed	Time to be announced
Mid-Year BBQ	To be confirmed		

Message from the Chairman

Greetings from Hanmer Springs everyone.....it is 32 degrees here at the moment so not too conducive to having a hot spring dip at the moment!!! I'll definitely have a dip in the Main pool tomorrow though!

Last week Roger C asked me if I would like write something for our next newsletter and after I 'ummed and arrrrred' he said " don't worry only if you want to. However, on the drive up from Timaru this morning I thought there are a couple of things that I would like to say.

Firstly, I am so impressed with the way things are progressing at the shed at the moment on many fronts.

The imminent completion of the meeting and amenities building.

clearing and sorting out of bays A and B

sorting and other preparations for the shed clearance day

building and making of shelves and storage boxes

as well as all usual project work, rat traps, firewood, garden.....

this clearly shows we really work well as a team Thank you ALL!!!!

Secondly thanks to all those who volunteered to help assemble the rubbish bins along with Rotary Kapiti at short notice A big thanks to Ray N who stepped up and took the lead. Their efforts will see our building fund grow by 2K.

Again, this demonstrates just what great team we are and that by working together we get things done.

Tony A

Yet another new Phone App

New mobile phone Apps are born every four minutes, some survive to the age of one hour, others last to the end of the day and just occasionally one grows up and reached maturity. This app GoodSAM had reached the exalted position of being of use, not only to the bearer but to the human race.

GoodSAM as you might guess stands for Good Samaritan and having it on your phone, and having had some first aid training in, (treatment of), cardiac arrest it lets you know when someone in your locality needs your skills. If you have had this training and, can remember what you learned, this app is for you. It's your chance to actually use the training.

If you are interested have a look at <https://www.wfa.org.nz/about-us/news/goodsam/> it tells you all about it, including having a link to the GoodSAM training web site.

You download the app to your phone from the Google, Apple and Microsoft App stores.

Work in Progress

A summary of what's going on at the shed. I know I will miss something but there's always next time if you get hold of me.

Children's blocks

Chris T is always busy doing something. This time he has made a lovely brightly coloured set of children's blocks. They have been given to the repair shop in Levin who will give it to some child. As usual he's busy making more.



Chris T



Construction of a New Tardis

David M building a Tardis for his granddaughter to go travelling. If you don't know what Tardis means, shame on you!

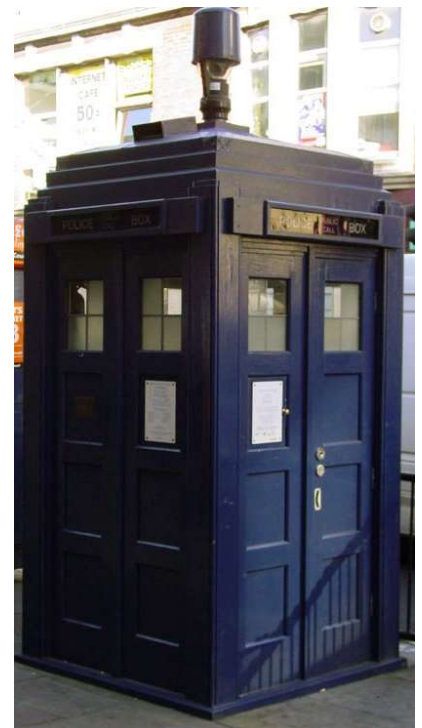


Tardis means **Time And Relative Dimension In Space** and is the time machine used by Doctor Who to travel throughout the universe and time.

It was invented in the BBC studio workshops and looks like an early police box - it is alleged that it came from the set of 'Dixon of Dock Green' -if you can remember back so far!

Don't be fooled by the small size and apparent solidity of the box and appearance of being made by five pieces of ply. Its Relative Dimension Stabilizer has yet to be installed so that the inside is bigger than the outside. Dave's hand gestures are required to configure the stabilizer.

Here is a picture of Dave's completed Tardis with the working Relative Dimension Stabilizer as it was when it travelled to Lambton Quay in 1990



Ratters Again

It seems that the ratters are always getting the publicity – and no doubt it is earned. We got a thank you email from Wayne, who works for the Nikau Valley Restoration Society, thanking us for making the traps and showing us an example of the trapping success of the 150 traps or so that we have made so far.



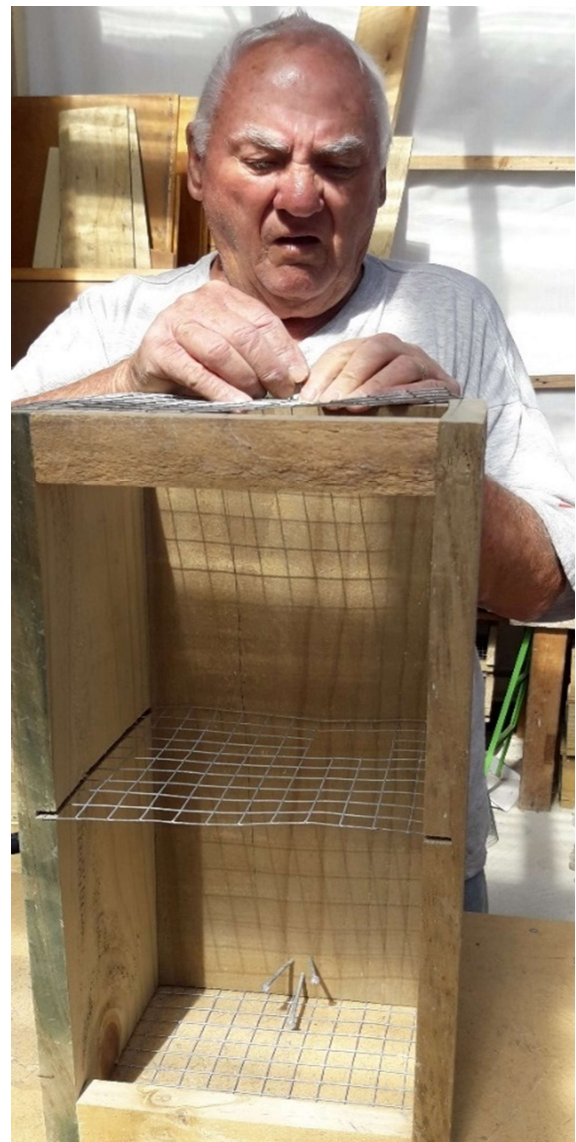
Wayne with a set of labelled traps



Trapping Success



Ray N ensuring the Shed branding that goes on every trap.



It takes concentration to build a rat trap – Geoff N shows it well.

Weta Motels

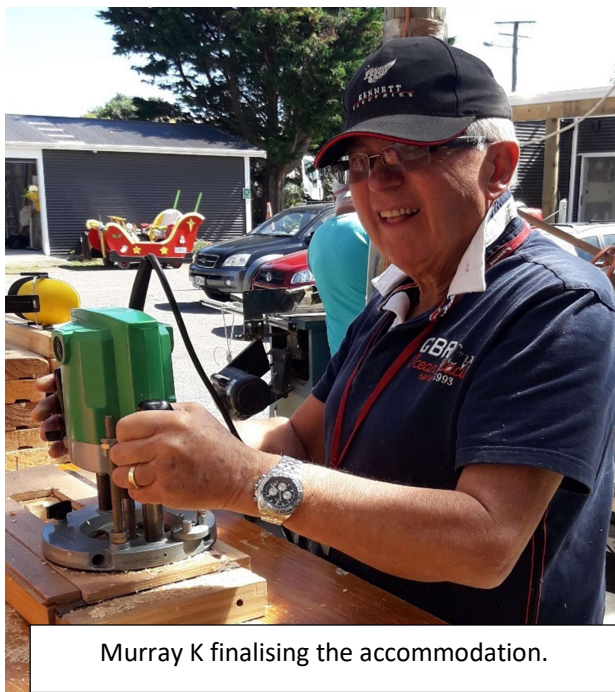
The production of Weta Motels is proceeding at a pace. It's a good job there's so much timber to use up! Wetas will be able to sleep in comfort.



Dennis K and Tony W doing the initial cutting out for the weta accommodation – and creating a lot of shavings in the process.



Motels in waiting!



Murray K finalising the accommodation.



A Harem
of weta

Tree Weta are commonly encountered in suburban settings in New Zealand's North Island. They are up to 40mm long and most commonly live in holes in trees formed by beetle and moth larvae or where rot has set in. The hole is maintained by the wētā and any growth of the bark surrounding the opening is chewed away.

They readily occupy a preformed gallery in a piece of wood (a "wētā motel") and can be kept in a suburban garden as pets. A gallery might house a harem of up to 10 adult females and one male.

Tree wētā are nocturnal. Their diet consists of plants and small insects.^[1] The males have much larger jaws than the females, though both sexes will make rasping noises (stridulate) and bite when threatened.

Wikipedia

Yet another shed.



Jim W and Keith H searching for whoever built it to set them 'plumb'

Sometimes I think that the MenzShed is so called because of the proliferation of sheds! If I am away for a week when I come back yet another has bred despite efforts of Keith H and Jim W to keep them under control. They will accept no responsibility for the 'plumbness' of the latest shed and the absence of a disabled person's entrance!



A surreptitious inspection by Cliff D

Bins for Kapiti

A waste management company approached Rotary Kapiti to assemble and deliver approx 4,000 bins within a tight time frame. - Rotary asked MenzShed for some help. We were originally asked to assemble at least 2,000 bins for them and were guaranteed \$2,000 for our efforts.

However, Rotary members managed to assemble all but 1000 of the bins, but still needed our help to finish. A team led by Ray N, (I don't want to list people in case I miss someone), jobs like fixing lids and wheels and of course stickers.



Making Snow from Fish tanks



Brian S playing Father Christmas.

We were approached to see if we could trim the Perspex base from a fish tank. Of course we had a go and the job grew like Topsy. In the end we did 14 tanks and earned \$600 for the shed. The pictures will show where the snow came in!



'Skip' generating snow.



Brian S and Roger C routing the base to the profile of the tank.



Some of the completed fish tanks inverted

Amenities Block Progress

The gib stoppers are in, in fact they are nearly out. Soon be ready for a coat of paint and electrical second fix.



Gib stoppers doing final finish.



David C fixing a duct cover to hold even more cables.



Peter H has spent a great deal of time sanding and preparing for paint.



Workshop Block Progress

For those who didn't know the Amenities block is to have an offspring called the 'Workshop'. It is to go where garages A & B currently sit. Unfortunately, the garages are currently full of 'stuff' which must be moved into another dimension. Failing possession of a matter transmitter the 'stuff' is being sorted into boxes and the carefully preserved timber, loaded on to the back of a truck. These pictures show the current state of the process and those responsible.



Doug C, Hans V and Dorwin H, (inset) have been going through the 'stuff' sorting it into boxes and cataloguing what we have. Under the guidance of Alan M.



John D helping to clear out the timber store. Helped by Mike E, in the background



Dave P 'disposing' of the timber.

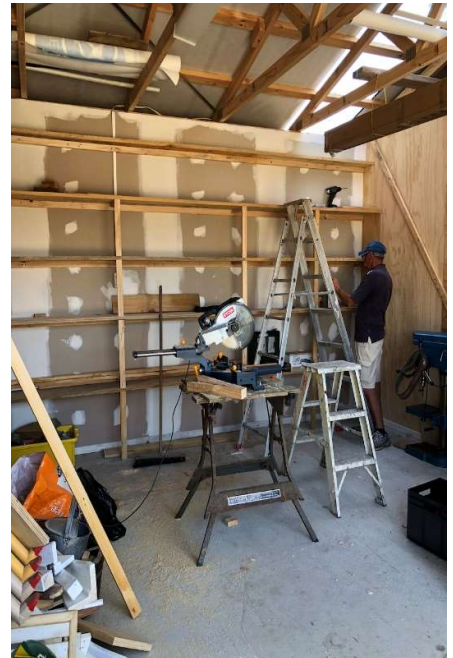
Other activities around the Site



Vegetables for the food bank from the garden



Rashid doing good work cleaning up.



Shelving in the garage



Keith H re-upholstering furniture



Very nice chess board by John D



No! He is not doing what you think he is doing!

Ross Collins' Farewell

There was a good turnout with our lot matching the number of family members. The heavy black sand was a bugger to walk in and there were a few obstacles to negotiate but time if not the tide was on our side. I am sure that I am not the only one that got his feet wet.



Once there, most of us checked out Ross's cave and it was well worth doing.

One of Ross's daughters made a short speech followed by another short address and poem from our own Tony. Ross's granddaughter ended the formal proceedings with yet another well-chosen poem to her grandfather.

Family members and sheddies then took turns to cast Ross's ashes into his much-loved coastal waters. The mood was light-hearted and not very reverent.



Jokes were made at Ross's expense and he would have loved it that way. A very fitting send-off for an old friend.

An even slower trek back to the cars was followed by something to eat and drink at a local café. Meal over we bid farewell to Ross's family and joined the slow-moving line of cars heading for the Kapiti coast.



Entrance to the cave

The Cave's History

Ross found the cave when he got caught in a rainstorm and used it for shelter, he then spent about two years chiseling it out to form his abode. He lived in the cave for about half his time and in a motor home nearby the remainder.

The cave is about 3m deep and has an upstairs inner cave where he made his bed. It had timber framing at the entrance to form a doorway for the stormy nights – the cave faces out to Cook Strait.

Ross died of prostate cancer last September.



The beach walk, it was hard going - for some!

I have tried to include all the happenings at the shed but of course have missed some – apologies. Do approach me to include what is happening next time. Also, if you want a copy of a picture herein please let me know and I will mail it to you.

A special mention of important MenzShed Kapiti backers, local business, supporters and sponsors

Harcourts

Printing The Brochures



Goodman Contractors Ltd



The**Support**Desk

Driving The Website



GUS EVANS NURSERIES

Plants for the Plots



Contributing To Provide
Accessible Amenities



Boys Toys and Just Stuff for Community Projects